



HEMINGSTONE

THE FIRST CHOICE

High Speed Shopping Bag Making Machines



HM-830MFP / HM-1030MFP

Super High Speed Soft Loop Handle, Patch & Die Cut Plastic Bag Making Machine



Die Cut Handle Bag

Patch Handle Bag

Soft Loop Handle Bag

This is a high speed and multi-function machine combining HM-830MF, high speed soft loop handle bag making machine and HM-830MP, high speed patch handle bag making machine. It is the best choice for increased capacity and space-saving benefits.

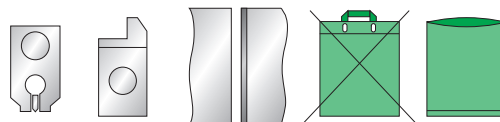


Manufacture of Carrier Bags

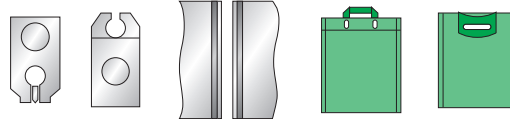
Standard (Side Sealing Bar)



Optional (Bottom Sealing Bar)



Optional (Double Sealing Bar)



SPECIFICATIONS :

Model	Bag Size				Max. Production Speed (cycles/min)	Thickness of Film (mm)	Heaters (kw)	Power Required (kw)	Machine Dimensions			Machine Weight (kg)	Gross Weight (kg)	Air Compressor (not included) (hp)
	Width (mm)	Length (mm)	Top Folding (mm)	Bottom Gusseting (mm)					L (m)	W (m)	H (m)			
HM-830MFP	250~650	250~650	Max. 75	up to 65	Patch 150 pcs Soft handle 120 pcs Die cut 150 pcs	0.045~0.09	3 kw x 1 0.3 kw x 6 0.4 kw x 6	15	9.8	3.2	1.85	4600	5600	7.5
HM-1030MFP	250~650	250~850	Max. 75	up to 65	Patch 150 pcs Soft handle 120 pcs Die cut 150 pcs	0.045~0.09	4 kw x 1 0.3 kw x 6 0.4 kw x 6	16	9.8	3.4	1.85	5200	6300	7.5
HM-830MF	250~650	250~650	Max. 75	up to 65	120 pcs	0.045~0.09	2.1 kw x 1 0.6 kw x 2 0.4 kw x 6	10	8.2	2.3	2.1	3800	4800	7.5
HM-1030MF	250~650	250~850	Max. 75	up to 65	120 pcs	0.045~0.09	3.1 kw x 1 0.6 kw x 2 0.4 kw x 6	11	8.2	2.5	2.1	4200	5200	7.5
HM-830MP	250~650	250~750	—	up to 65	150 pcs	0.04~0.08	3 kw x 1 0.3 kw x 2 0.4 kw x 6	10	9.7	2.5	1.85	3000	3500	10
HM-1030MP	250~650	250~950	—	up to 65	150 pcs	0.04~0.08	4 kw x 1 0.3 kw x 2 0.4 kw x 6	11	9.7	2.7	1.85	3600	4300	10



Patch Handle Bag

HM-830MP / HM-1030MP

Super High Speed Patch Handle Plastic Bag Making Machine

This is high efficiency patch handle bag making machine, our third generation high-tech product from HM-820NP, in addition to the original superior designs, the Patch handle attachment is driven by two servo motors for increased stability and higher production speeds.



Auto Conveyor Table



Patch Welding Unit

HM-830MF / HM-1030MF

Super High Speed Soft Loop Handle & Die Cut Handle Bag Making Machine

This is the cutting edge design super high-speed soft loop handle & die cut handle bag making machine that we have researched and developed over a decade. The designs of the entire production processes are the results of brainstorming and nonstop improvement. This machine highly enhances production efficiency, reduces production cost and allows the buyer to gain a significant margin of profit in the market.



Die Cut Handle Bag



Soft Loop Handle Bag

FEATURES

HM-830MFP / HM-1030MFP / HM-830MF / HM-1030MF

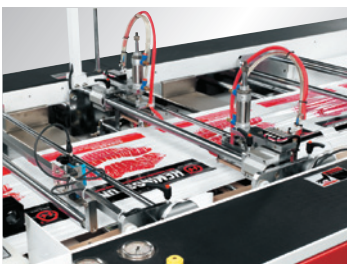
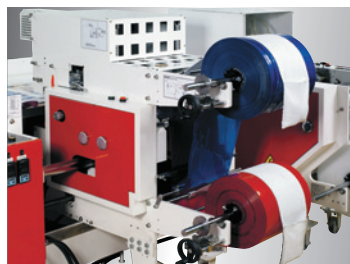


Photo-cell Control Pre-warming Station



Hem Sealing System



Manufacture of Soft Loop Carrier Bags



Auto Conveyor Table

HM-810SFP-SV / HM-1000SFP-SV HM-1250SFP-SV

Fully Automatic Soft Loop Handle, Patch Handle, Poly Draw & Die Cut Bag Making Machine



Die Cut Handle Bag

Patch Handle Bag

Poly Draw Handle Bag

Soft Loop Handle Bag



SPECIFICATIONS :

Model	Bag Size				Max. Production Speed (cycles/min)	Thickness of Film (mm)	Heaters (kw)	Power Required (kw)	Machine Dimensions			Machine Weight (kg)	Air Compressor (not included) (hp)
	Width (mm)	Length (mm)	Top Folding (mm)	Bottom Gusseting (mm)					L (m)	W (m)	H (m)		
HM-810SFP-SV	250~650	250~650	Max. 75	up to 65	Soft handle 55 Patch 65 Poly draw 65	0.045~0.09 0.8 kw x 2	1.8 kw x 1 0.4 kw x 6	8.5	7.6	3.0	1.85	3500	5
HM-1000SFP-SV	250~650	250~900	Max. 75	up to 65	Die cut 75	0.045~0.09	2.8 kw x 1 0.8 kw x 2 0.4 kw x 6	10	7.6	3.2	1.85	4200	5
HM-1250SFP-SV	250~650	250~1050	Max. 75	up to 65		0.045~0.09	2.2 kw x 1 0.8 kw x 2 0.4 kw x 6	12	7.6	3.45	1.85	5000	5
HM-1000R-SV	Max. 700	Max. 950	Max. 75	up to 65	Max. 75	0.015~0.05	6.0 kw	9	7.0	1.75	1.85	1000	5
HM-1250R-SV	Max. 900	Max. 1200	Max. 75	up to 65	Max. 70	0.015~0.05	7.2 kw	10	7.0	2.00	1.85	2000	5
JP-32RP-SV	200~650	200~700	Max. 75	up to 65	Patch 65 Poly draw 65 Die cut 75	0.025~0.07	1.8 kw x 2 0.5 kw x 2 0.4 kw x 4	8	7.0	2.00	1.85	3000	5
JP-40RP-SV	200~650	200~900	Max. 75	up to 65		0.025~0.07	2.2 kw x 1 0.5 kw x 2 0.4 kw x 4	10	7.0	2.2	1.85	3500	5
JP-50RP-SV	200~650	200~1100	Max. 75	up to 65		0.025~0.07	2.8 kw x 1 0.5 kw x 2 0.4 kw x 4	12	7.0	2.45	1.85	4200	5
JP-32P-SV	200~650	200~760	Max. 75	up to 65	65	0.025~0.07	1.8 kw x 1 0.4 kw x 4	5.5	7.0	2.00	1.85	2700	5
JP-40P-SV	200~650	200~960	Max. 75	up to 65	65	0.025~0.07	2.2 kw x 1 0.4 kw x 4	7.0	7.0	2.2	1.85	3000	5
JP-50P-SV	200~650	200~1160	Max. 75	up to 65	65	0.025~0.07	2.8kw x 1 0.4kw x 4	9.0	7.0	2.45	1.85	3400	5

HM-1000R-SV / HM-1250R-SV

Heavy Duty High-Speed Automatic Special Draw Tape Welding Machine



Poly Draw Handle Bag

This is a special machine for manufacturing Draw Tape Garbage Bags from the reel to finished article in one fully automatic process with pre-sealing equipment. It is a multi-function automatically controlled machine for top folded gusseted bags. Two types of transmission are available - mechanical or servo-drive, each has its own advantages.



JP-32RP-SV JP-40RP-SV JP-50RP-SV

Fully Automatic Patch Handle, Poly Draw & Die Cut Bag Making Machine



Die Cut Handle Bag



Patch Handle Bag



Poly Draw Handle Bag

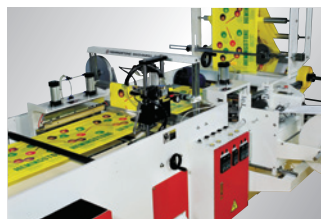


FEATURES

HM-810SFP-SV



Photocell Control and Pre-sealing Station



Handle Punch



The Manufacture of The Patch Carrier Bags

Manufacture of Soft Loop Carrier Bags and Poly Draw Carrier Bags



Patch Handle Bag

HM-810NP-SV / HM-1000NP-SV

High Speed Film Welding Machine for Production of PE. Patch Handle Carrier Bags.

This is an automatic patch hand bag manufacturing machine with high output and easy operation.



HM-820NF-SV / HM-1000NF-SV

High Speed Soft Loop Handle & Die Cut Bag Making Machine



Die Cut Handle Bag



Soft Loop Handle Bag



SPECIFICATIONS :

Model	Bag Size				Max. Production Speed (cycles/min)	Thickness of Film (mm)	Heaters (kw)	Power Required (kw)
	Width (mm)	Length (mm)	Top Folding (mm)	Bottom Gusseting				
HM-810NP-SV	250~650	250~750	-	up to 65 mm	100 pcs	0.04~0.08	1.8 kw x 1, 0.4 kw x 6	8.5
HM-1000NP-SV	250~650	250~900	-	up to 65 mm	100 pcs	0.04~0.08	2.8 kw x 1, 0.4 kw x 6	9.5
HM-820NF-SV	250~650	250~650	Max. 75	up to 65 mm	80 pcs	0.045~0.09	3 kw x 1, 0.3 kw x 6, 0.4 kw x 2	7
HM-1000NF-SV	250~650	250~850	Max. 75	up to 65 mm	80 pcs	0.045~0.09	4 kw x 1, 0.3 kw x 6, 0.4 kw x 2	8
HM-820NFP-SV	250~650	250~650	Max. 75	up to 65 mm	Patch 100 pcs Soft handle 80 pcs	0.045~0.09	3 kw x 1, 0.3 kw x 6, 0.4 kw x 6	10
HM-1000NFP-SV	250~650	250~850	Max. 75	up to 65 mm	Die cut 100 pcs	0.045~0.09	4 kw x 1, 0.3 kw x 6, 0.4 kw x 6	11

HM-820NFP-SV / HM-1000NFP-SV

High Speed Heavy Duty Soft Loop Handle & Patch Handle & Die Cut Plastic Bags Making Machine



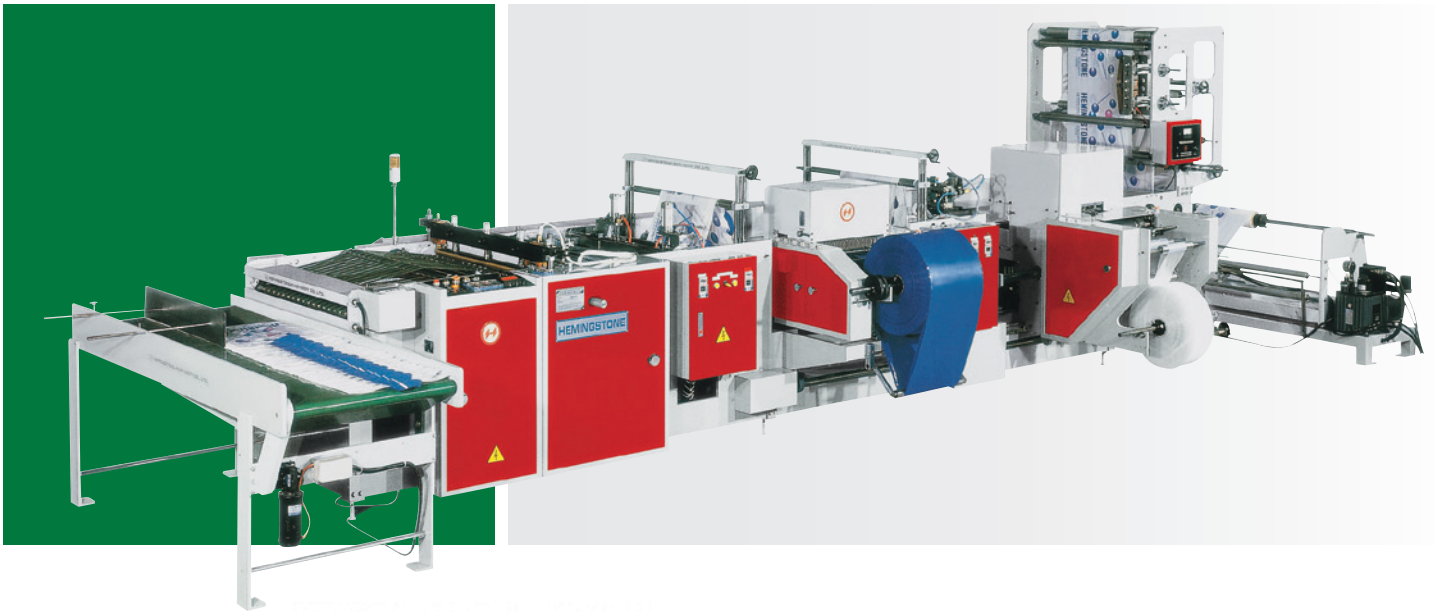
Die Cut Handle Bag



Patch Handle Bag



Soft Loop Handle Bag

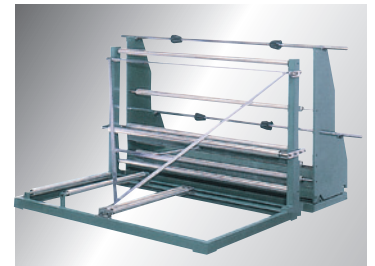


Unwind Systems and Top Fold (Standard)

The unwind unit is equipped with a pneumatic hydraulic web guide control system. The maximum reel diameter is 90m and maximum film width 85cm, maximum reel weight 150kgs. For converting sheet film, a folding unit can be purchased to run inline with the machine. A low friction top folding device for a single or twin sided fold through a system of folding rollers with guide plates is fitted. The whole unit is well designed for ease of operation and low maintenance.



Auto Conveyor Table (Optional)

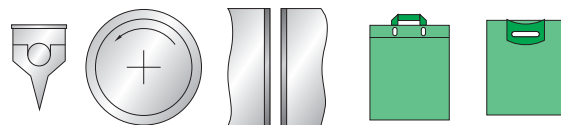


Folding Device (Optional)

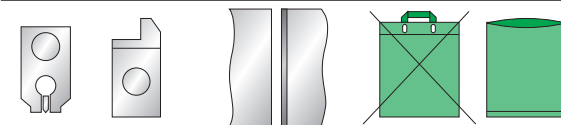
A folding frame can be supplied for single wounds sheet. This helps to reduce reel change as each reel would contain more meters for the same diameter. The unwind stand is equipped with edge guiding for accurate folding.

Manufacture of Carrier Bags

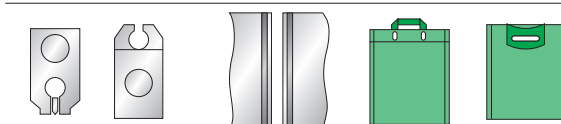
Standard (Side Sealing Bar)



Optional (Bottom Sealing Bar)



Optional (Double Sealing Bar)



Machine Dimensions			Gross Weight (kg)	Air Compressor (not included) (hp)
L (m)	W (m)	H (m)		
6.2	2.5	1.85	3500	7.5
6.2	2.7	1.85	4300	7.5
7.6	3.2	1.85	4800	7.5
7.6	3.5	1.85	5000	7.5
7.6	3.2	1.85	5000	7.5
7.6	3.4	1.85	5600	7.5

JP-32HSE / JP-40HSE

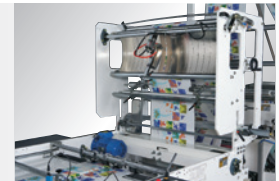
Super High Speed Side Sealing Bag Making Machine

250 cycles/min.

Collecting bags with a deceleration function to make the bags collected neatly in order to reduce manpower.



Hydraulic Unwind Unit with Folding Unit for Single Sheet (Optional)



Hot Slitting Device (Optional)

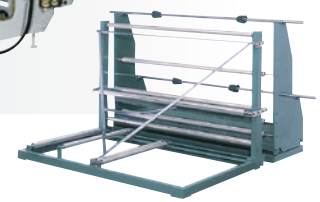
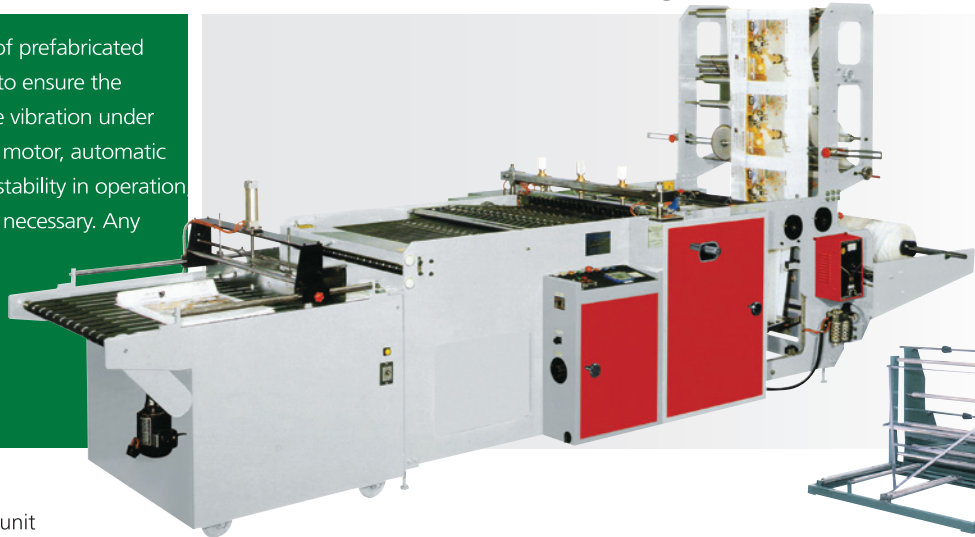


Sealing Knife "Turnover" Device

JP-32SE-SV / JP-40SE-SV

Heavy Duty High-Speed Automatic Special Side Bag Welding Machine

The machine frame is made of prefabricated flame cut sheet 16mm thick to ensure the machine rigidity, less machine vibration under high-speed running. Feeding motor, automatic control, save labor adjusted, stability in operation professional technician is not necessary. Any different type of the bag with several use as option, easy to replace.



Folding Device (Optional)

HM-810SB-SV / HM-1000SB-SV

High-Speed Universal Welding Machine for Production Side Weld, Bottom Weld & Double Weld Bag (Servo-drive system)

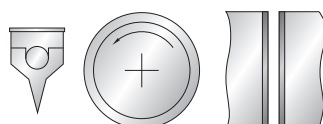
Optional Accessories

- Different type of punching unit
- Edge guider
- Longitudinal sealing device
- Perforation equipment
- Round bottom seal for chicken bag
- Glue adhesive tape device
- DHL bag (courier service bag) equipment
- Bottom triangle sealing device
- Auto Conveyor Table
- Folding Unit

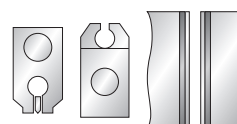
Standard for SE-SV Series (Side Sealing Bar)



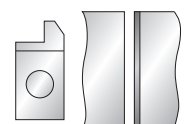
Standard for SB-SV Series (Side Sealing Bar)



(Double Sealing Bar)



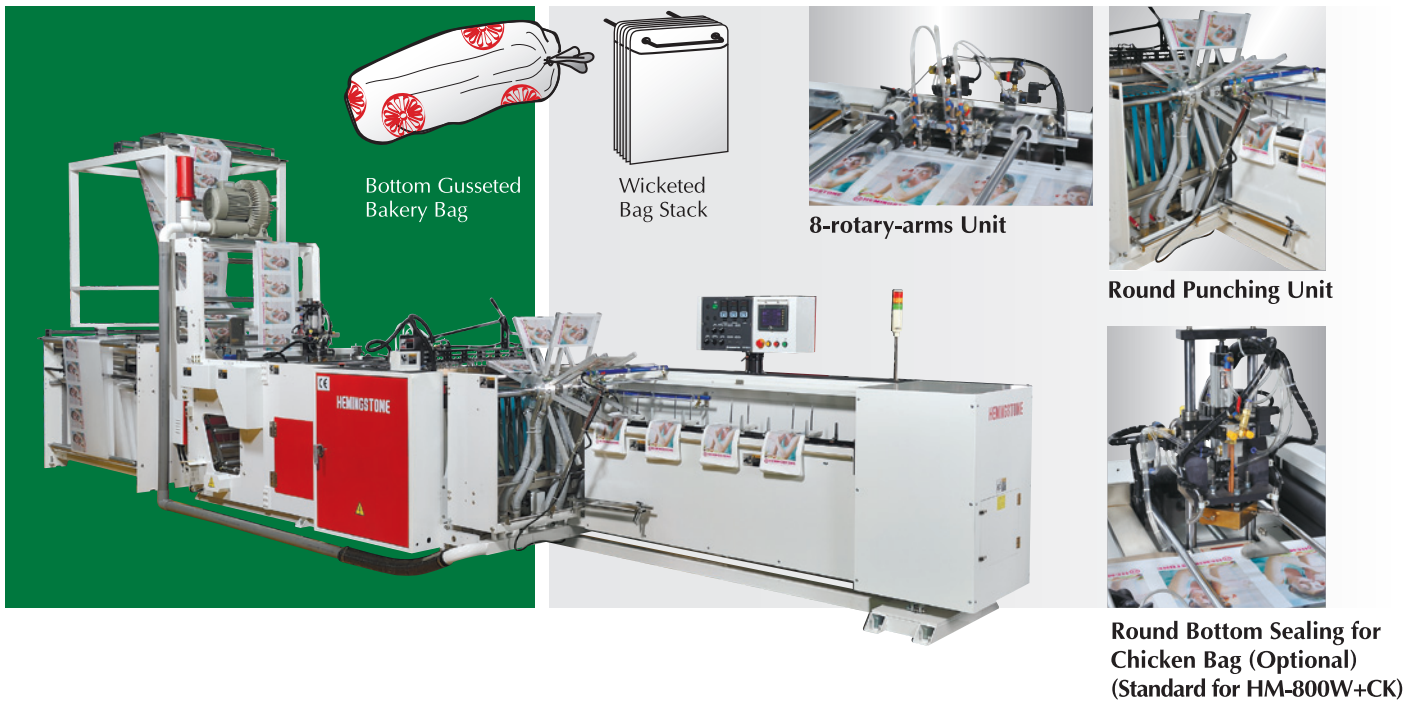
(Bottom Sealing Bar)



HM-800W / HM-800W+CK / HM-1000W

High Speed Automatic Wicketer with Servo Motor Drive System

(CK : for Chicken Bag)



SPECIFICATIONS :

Model	Bag Size				Max. Production Speed (cycles/min)	Thickness of Film (mm)	Heaters (kw)	Power Required (kw)	Machine Dimensions			Gross Weight (kg)	Air Compressor (not included) (hp)
	Width (mm)	Length (mm)	Top Folding (mm)	Bottom Gusseting (mm)					L (m)	W (m)	H (m)		
JP-32HSE	102~1000	77~760	Max. 75	Max. 65	250	0.01~0.2	2.5	4.5	4.2	1.65	1.85	2200	7.5
JP-40HSE	102~1000	77~960	Max. 75	Max. 65	250	0.01~0.2	2.5	4.5	4.2	1.85	1.85	2500	7.5
JP-32SE-SV	77~760	77~760	Max. 75	Max. 65	200	0.01~0.2	4	2.0	4.2	1.55	1.85	1180	7.5
JP-40SE-SV	77~760	77~960	Max. 75	Max. 65	180	0.01~0.2	4.5	2.5	4.2	1.75	1.85	2200	7.5
JP-50SE-SV	77~760	77~1210	Max. 75	Max. 65	160	0.01~0.2	6.0	4.0	4.2	2.00	1.85	2500	7.5
HM-810SB-SV	Side / double sealing 102~760	77~760	Max. 75	Max. 65	40~160	0.01~0.2	4	2.0	4.2	1.55	1.85	1800	7.5
	Bottom sealing 77~760	250~760											
HM-1000SB-SV	Side / double sealing 102~760	77~960	Max. 75	Max. 65	40~150	0.01~0.2	4.5	2.5	4.2	1.75	1.85	2200	7.5
	Bottom sealing 77~960	250~760											
HM-800W	90~330	300~700	Max. 75	Max. 65	Bakery PE: max. 300 PP: max. 200	0.015~0.07	4	10	8.0	3.0	1.85	2200	7.5
HM-800W+CK	90~330	300~700	Max. 75	Max. 65	Bakery PE: max. 300 PP: max. 200 Chicken bag: max.250	0.015~0.07	4 x 1 0.45 x 1 0.5 x 1	10	8.0	3.0	1.85	2200	7.5
HM-1000W	90~330	300~900	Max. 75	Max. 65	Bakery PE: max. 300 PP: max. 200	0.015~0.07	4.5	10	8.0	3.2	1.85	2800	7.5

HM-1000MSR+IL

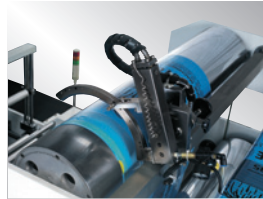
High Speed Draw Tape Garbage Bag Making Machine with Bag-on-Roll



Poly Draw Handle Bag



This is a HIGH SPEED DRAW TAPE GARBAGE BAG MAKING MACHINE WITH BAG-ON-ROLL. Design uses 2 sets of servo motors to take up the film and 4 sets of servo motors to enable non-stop film feeding for main machine to complete the production. Increases production capacity. This multi-function machine makes both draw tape garbage bag and bottom sealing bag on roll.



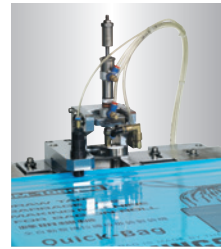
Hot Air Sealing Unit

The design on this unit seals the top with hot air. Continuous sealing increases productivity.



Fully Automatic Rewinding Machine for Overlap & Perforation Bag-on-roll without Core (Automatic Changing)

- Coreless winding of film rolls.
- Alarm system for auto stop.
- Automatic jam detection system.
- Automatic reset of film roll transfer.
- Four servo motors and one AC inverter motor.



The Semicircle Punching Unit

Film is taken up by servo motor and the design is non-stop punching. Operator can set length for high speed punching controlled by photo cell during production runs.

HM-1000SR+IL / HM-1250SR+IL

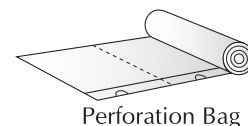
Fully Automatic Draw Tape Garbage Bag Making Machine for Overlap & Perforation Bag-on-Roll without Core (Servo Motor Control)



SPECIFICATIONS :

Model	Bag Sealing Size							Draw Tape Film Width (mm)
	Film Width for Unwind (mm)	Film Diameter (mm)	Bag Size		Production Speed (pcs/min)	Thickness of Film (Total mm)	Speed for Changing the Roll	
			Width (mm)	Length (mm)				
HM-1000MSR	950	1000	Max. 1000	Max. 900	Max. 200	0.015 ~0.05	Max. 8	100
HM-1000MSR+IL	950	1000	Max. 1000	Max. 900	Max. 200	0.015 ~0.05	Max. 10	100
HM-1000SR	950	1000	Max. 1000	Max. 900	Max. 120	0.015 ~ 0.05	Max. 8	100
HM-1250SR	1150	1000	Max. 1000	Max. 1100	Max. 100	0.015 ~ 0.05	Max. 8	100
HM-1000SR+IL	950	1000	Max. 1000	Max. 900	Max. 120	0.015 ~ 0.05	Max. 10	100
HM-1250SR+IL	1150	1000	Max. 1000	Max. 1100	Max. 100	0.015 ~ 0.05	Max. 10	100
HM-1100SR+TF	1050	1000	Max. 1000	Max. 1000	Max. 85	0.015 ~ 0.05	—	100
HM-1250SR+TF	1150	1000	Max. 1000	Max. 1100	Max. 85	0.015 ~ 0.05	—	100

HM-1000SR / HM-1250SR



Perforation Bag

Draw Tape Garbage Bag Making Machine for Bag-on-Roll

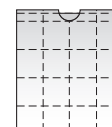
(Servo Motor Control)



Auto Changing Rewinding Machine without Core

- Auto changing rewind; machine cuts and changes automatically when get quantity reached. Finished product then falls to conveyor table.
- Optional auto labelling machine available.

HM-1100SR+TF / HM-1250SR+TF



Fully Automatic Draw Tape Garbage Bag Making Machine with Folding Piece by Piece (Servo Motor Control)



Individual bags are folded twice vertically and twice horizontally after perforation and side sealing. Bags are conveyed automatically to collecting table in final phase.



Draw Tape Film Diameter (mm)	Production of Rolls			Power Required (kW)	Machine Dimensions			Machine Weight (kg)	Air Compressor (not included) (hp)
	Without Core		Total Folded (times)		L (m)	W (m)	H (m)		
	Roll Width (mm)	Roll Dia. (mm)							
600	300	130	—	12	14.5	2.25	3.05	3000	7.5
600	300	150	—	16	15	2.25	3.05	3500	7.5
600	300	130	—	10	14.5	2.25	3.05	3000	7.5
600	300	130	—	12	15	2.75	3.65	4000	7.5
600	300	150	—	12	15	2.25	3.05	3500	7.5
600	300	150	—	15	15.5	2.75	3.65	4500	7.5
600	—	—	3	11	16	2.35	3.55	3000	7.5
600	—	—	3	12	16	2.5	3.55	4500	7.5



峰明機械有限公司

HEMINGSTONE MACHINERY CO., LTD.

No. 41, Wu-Kong 5 Rd., Wu-Ku Industrial Park, Wu-Ku Dist.,
New Taipei City 248, Taiwan

Tel: +886-2-2299-1616, 2299-5700 Fax: +886-2-2299-2070, 2299-2080

E-mail: hm.stone@msa.hinet.net hm_mail@hemingstone.com

www.hemingstone.com